

Data Sheet



Severe Acute Respiratory Syndrome Coronavirus 2 (SARS-CoV-2), Angiotension Converting Enzyme (ACE-2)

Catalog #: S2-44A-001

Protein Name:	Human Angiotension Converting Enzyme (ACE-2)
Origin:	Human
Residues:	AA 1-615
Source:	Expres ² S2
Purification tag:	Twin-Strep
Purity:	> 95%
Molecular Weight:	74.00 kDa, including tag
Description:	Angiotension Converting Enzyme (ACE-2) is a transmembrane protein, and serves as a main entry point into cells for some coronaviruses, including SARS-CoV-2 causing COVID-19. ACE-2 protein is purified by two-step chromatographic method: Strep-tag capture followed by SEC.
Storage:	-20 °C short term, -80 °C long term. Avoid freeze thaw cycles.
Buffer:	1 x PBS

SDS-Page

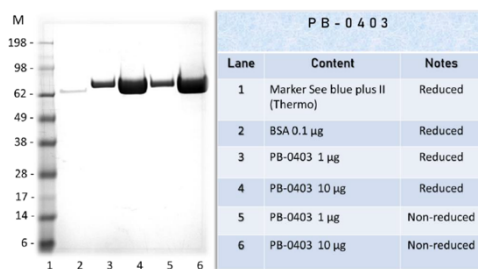
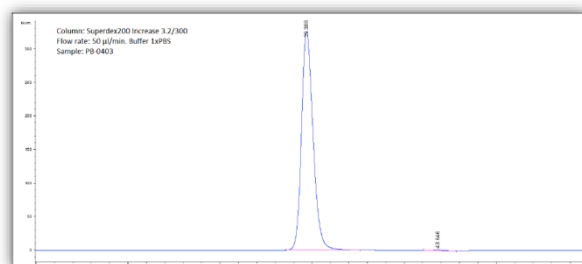


Figure 1 Coomassie stained SDS-PAGE analysis of PB-0403.

Analytical SEC Trace



For research use only, not for human, therapeutic, or diagnostic applications.

The buyer is not permitted to sell or otherwise transfer this product for Commercial Purposes without written approval from Expres²ion Biotechnologies.